



THOMAS FONTAINE

Independent perfumer and founder of a consulting & creation company PALLIDA, he is also working as in-house perfumer for Jean Patou, Jean-Louis Scherrer, Lubin, Faberlic...

He is creating for brands like Lubin, Jean Patou, Grès, L'Occitane, D&G, JL Sherrer, Léonard, J-Charles Brosseau, Ungaro, Sonia Rykiel, E. Aigner, Passionata, Perry Ellis, Alain Delon, Faberlic, Jaguar.....

He worked previously for Procter & Gamble, Technico-Flor, Charabot, Mane in Germany, USA and France

He graduated from the prestigious ISIPCA perfumery school at Versailles.

Passionate about classical music, he sings as a barytone in his spare time. Fine dinning and history are source of inspiration for this archeologist of Perfumery who likes on the one hand to rework old formulae and on the other create contemporary and innovative new accords.

SOME CREATIONS



GIN FIZZ
Lubin



BLACK JADE
Lubin



APPARITION PINK
Ungaro



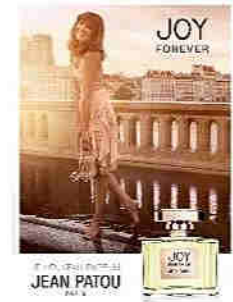
MIEL & CITRON
L'Occitane



DEBUT
Etienne Aigner



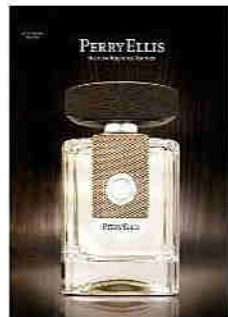
CABOTINE
FLORISSIME
Grès



JOY FOREVER
Jean Patou



N°6 L'AMOUREUX
D&G



FOR MEN
Perry Ellis



FIGARO
Lubin



BOIS D'ORIENT
J.C. Brosseau



CRUISER MAN
Faberlic